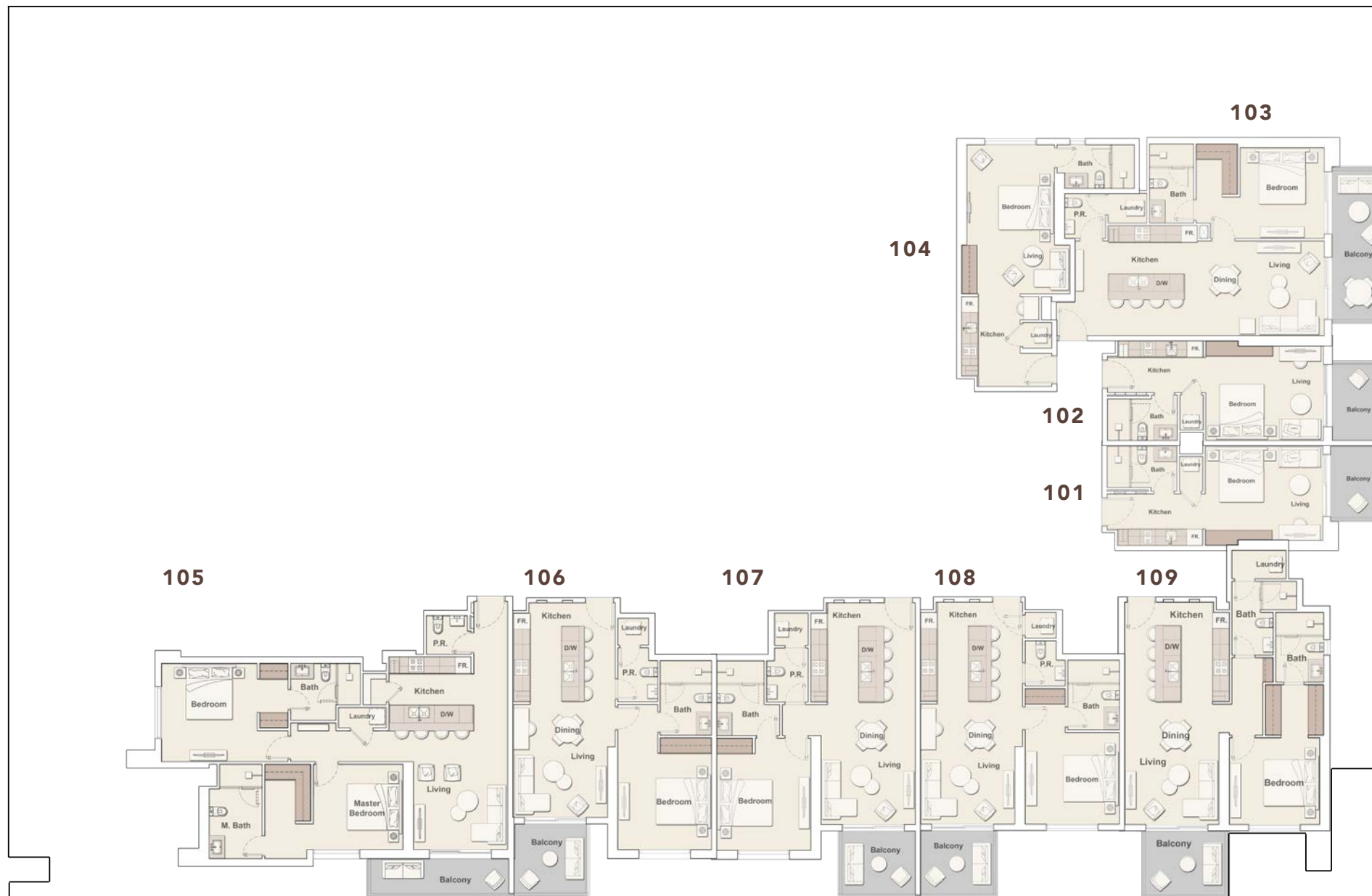




# PLAN DU 1<sup>ER</sup> ÉTAGE

## THE SLOANE

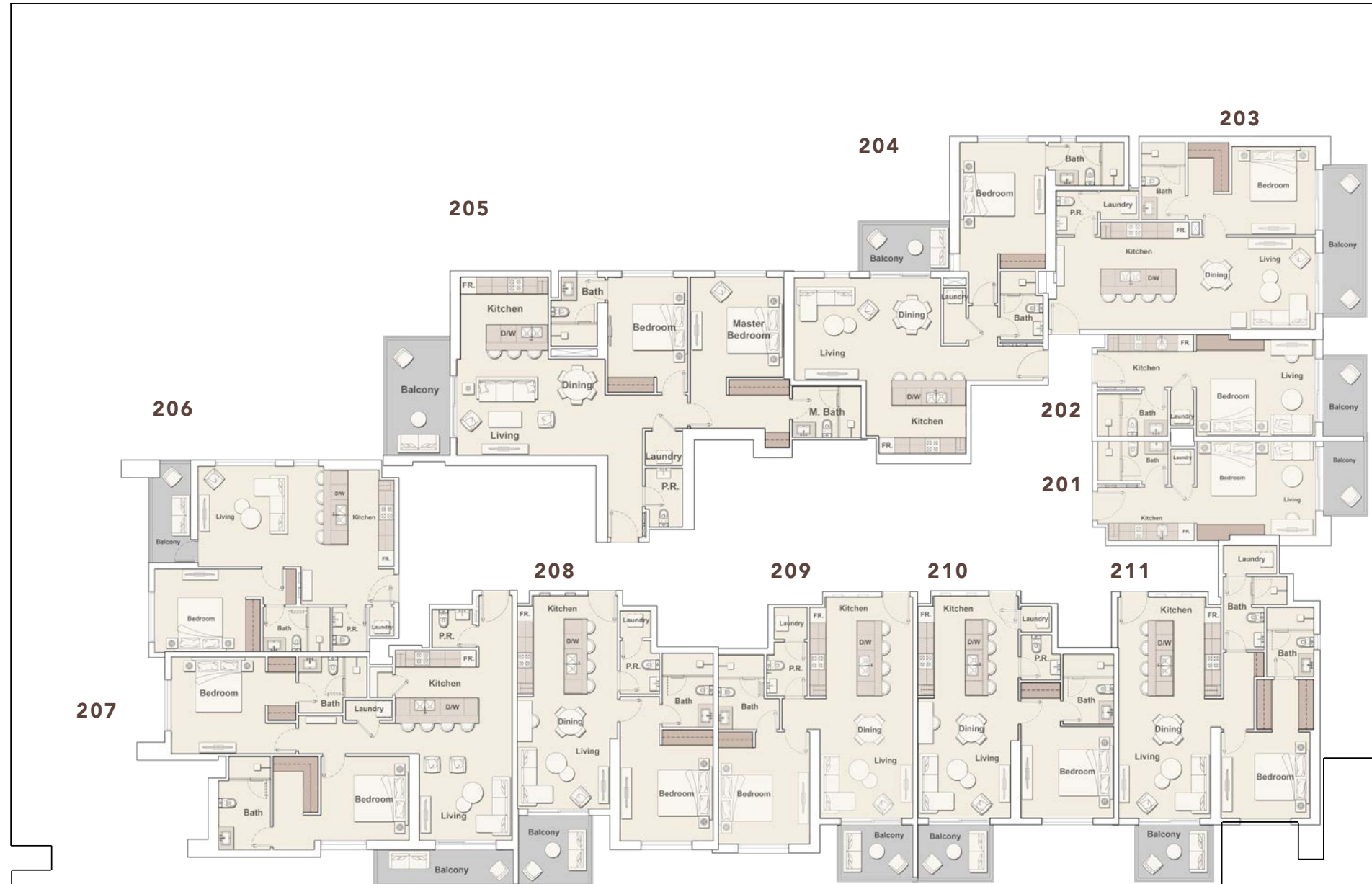
par BELGRAVIA HEIGHTS



# PLAN DU 2<sup>ÉME</sup> AU 13<sup>ÉME</sup> ÉTAGE

## THE SLOANE

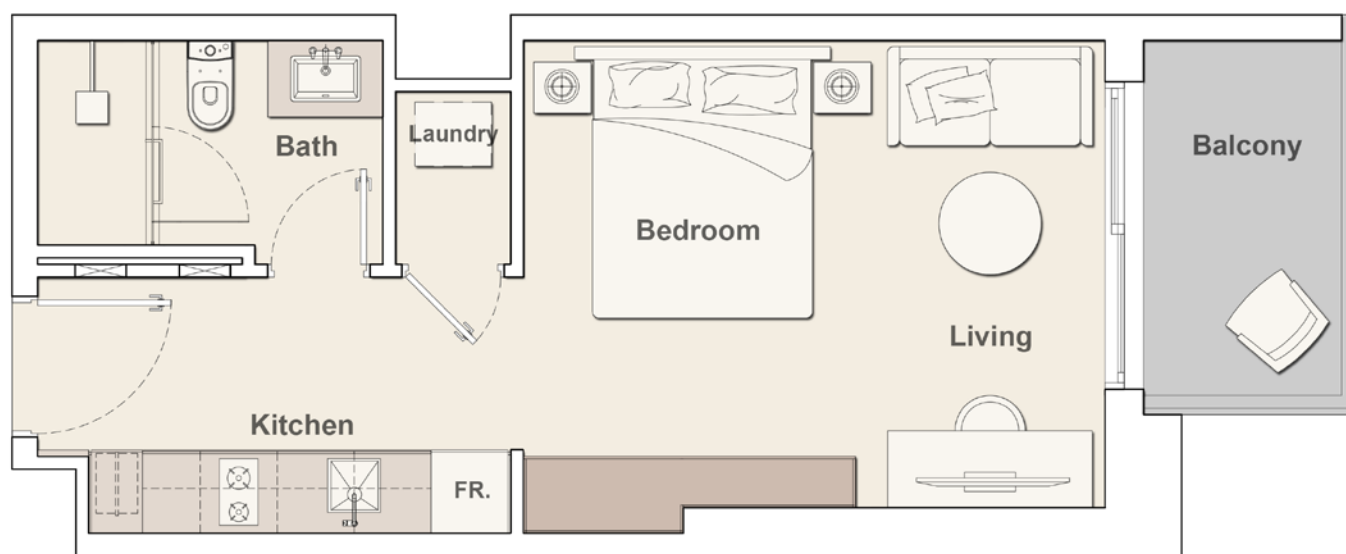
par BELGRAVIA HEIGHTS



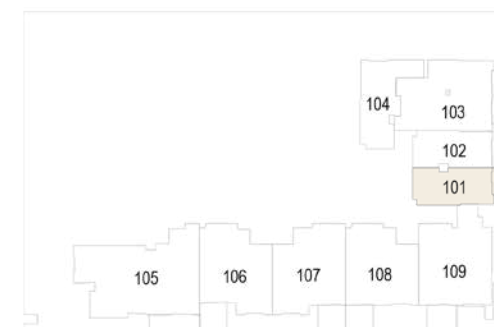
# T1 - TYPE E-1

## THE SLOANE

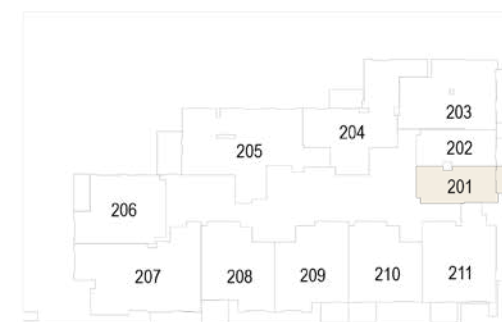
par BELGRAVIA HEIGHTS



### 1<sup>ER</sup> ÉTAGE



### DU 2<sup>ÈME</sup> AU 13<sup>ÈME</sup> ÉTAGE

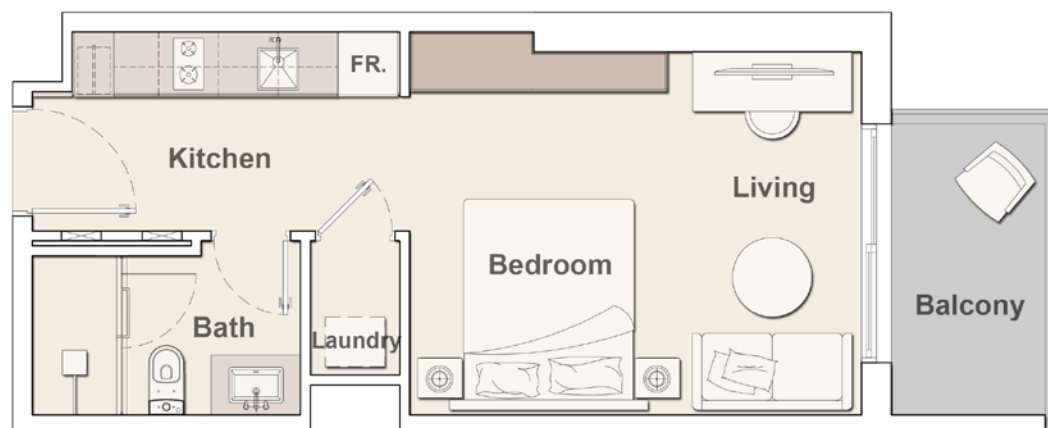


Surface interne	363.61 pi. ca.
Surface du balcon	56.40 pi. ca.
Surface totale	420.01 pi. ca.

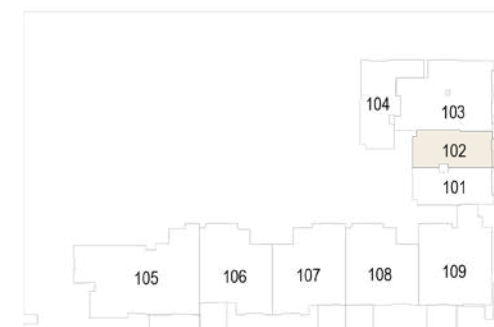
# T1 - TYPE E-2

## THE SLOANE

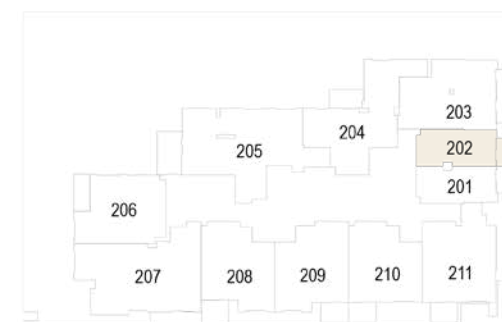
par BELGRAVIA HEIGHTS



### 1<sup>ER</sup> ÉTAGE



### DU 2<sup>ÈME</sup> AU 13<sup>ÈME</sup> ÉTAGE

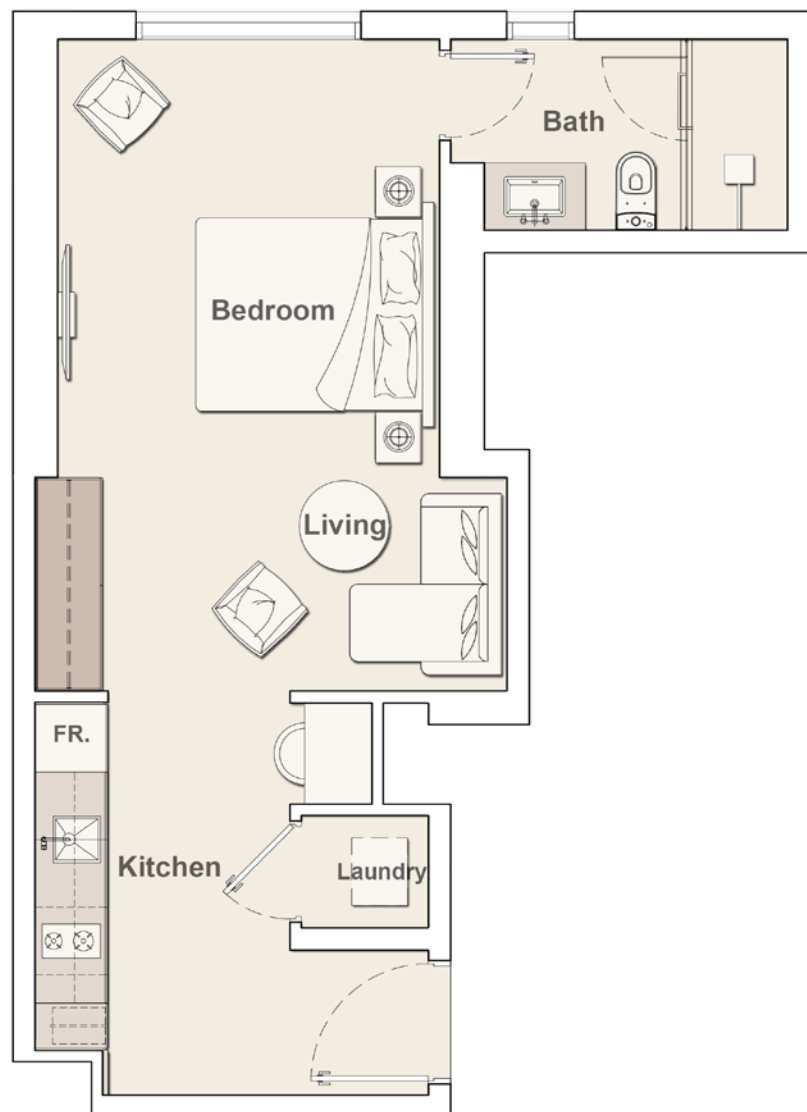


Surface interne	361.88 pi. ca.
Surface du balcon	59.20 pi. ca.
Surface totale	421.08 pi. ca.

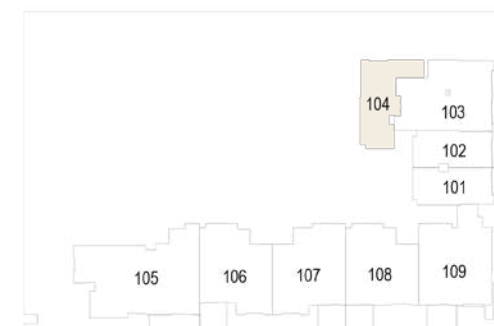
# T1 - TYPE G

## THE SLOANE

par BELGRAVIA HEIGHTS



### 1<sup>ER</sup> ÉTAGE

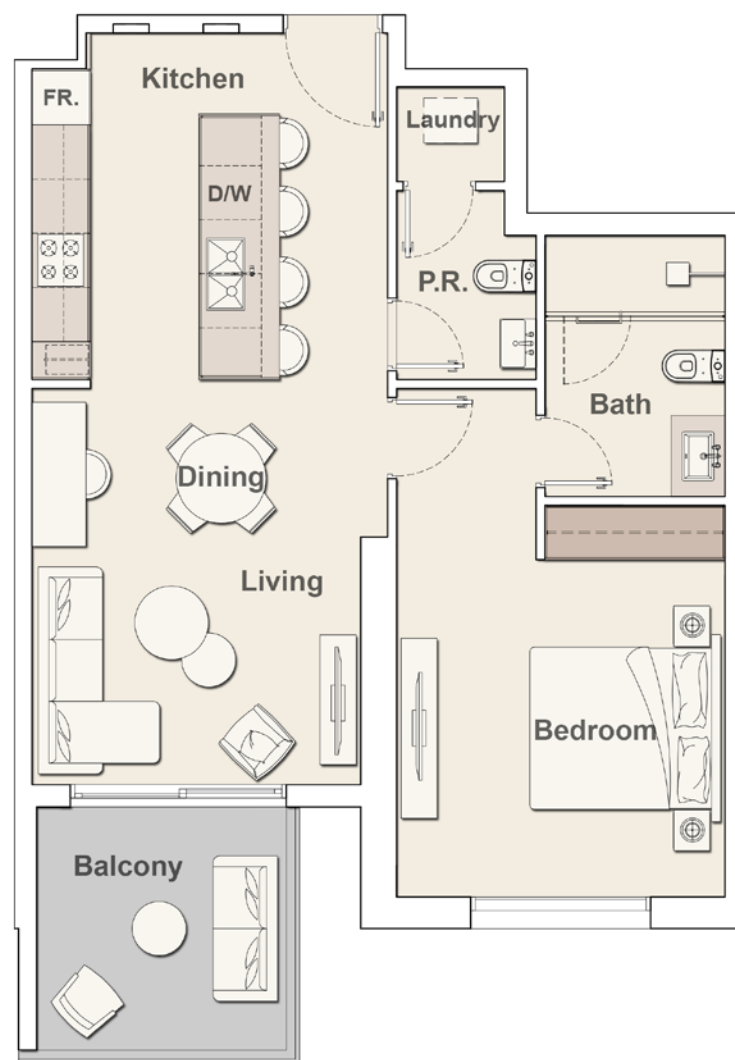


Surface interne	454.02 pi. ca.
Surface du balcon	
Surface totale	454.02 pi. ca.

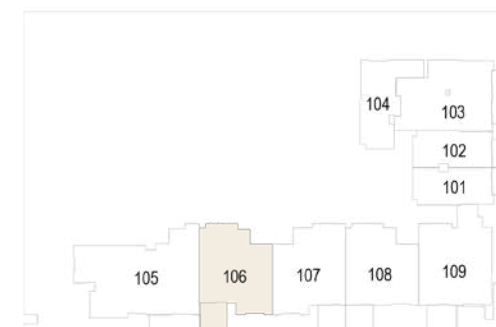
## T2 - TYPE B-1

# THE SLOANE

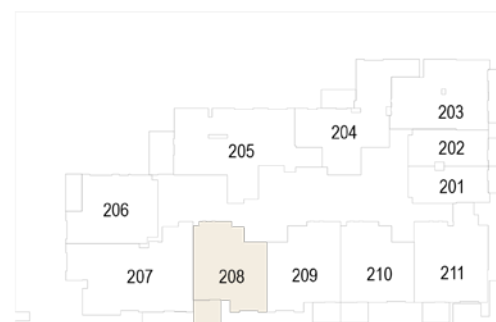
par BELGRAVIA HEIGHTS



### 1<sup>ER</sup> ÉTAGE



### DU 2<sup>ÈME</sup> AU 13<sup>ÈME</sup> ÉTAGE

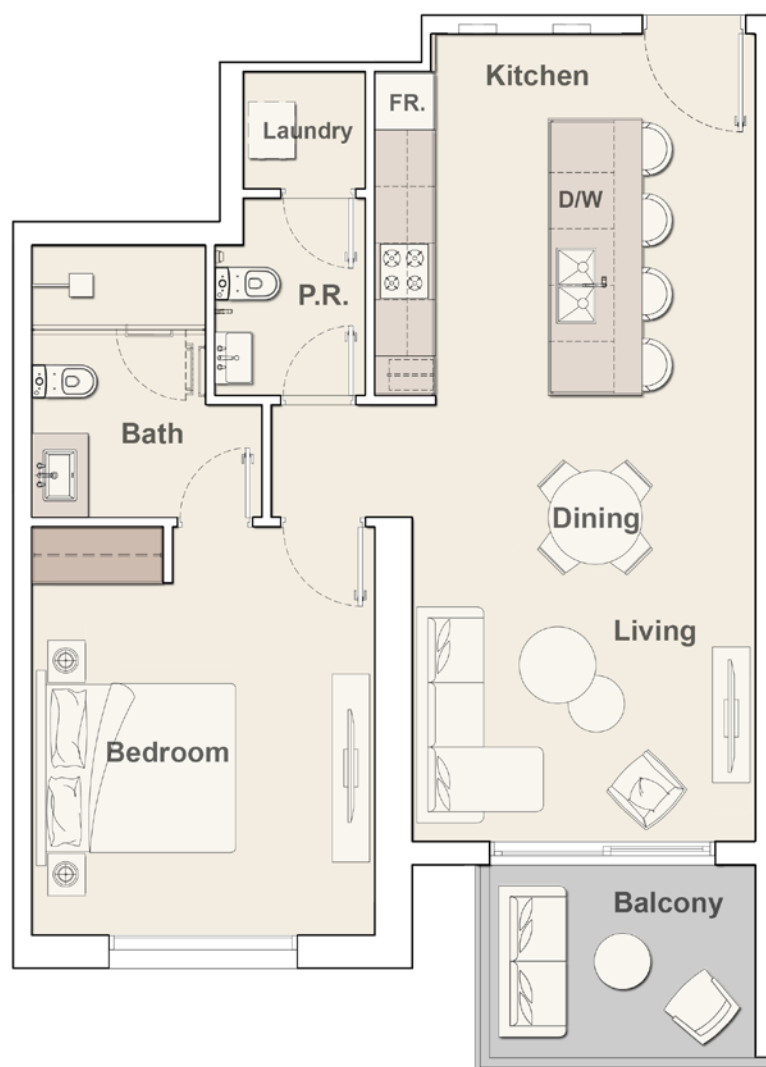


Surface interne	710.96 pi. ca.
Surface du balcon	91.49 pi. ca.
Surface totale	802.45 pi. ca.

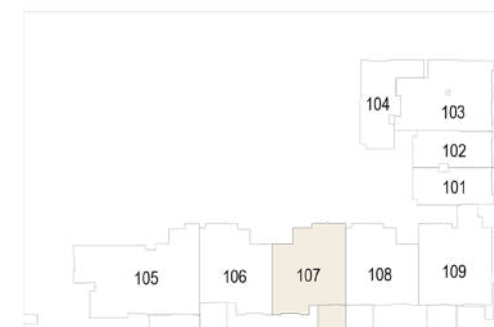
## T2 - TYPE B-2

# THE SLOANE

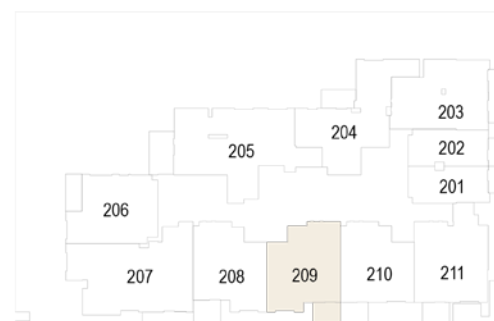
par BELGRAVIA HEIGHTS



### 1<sup>ER</sup> ÉTAGE



### DU 2<sup>ÈME</sup> AU 13<sup>ÈME</sup> ÉTAGE

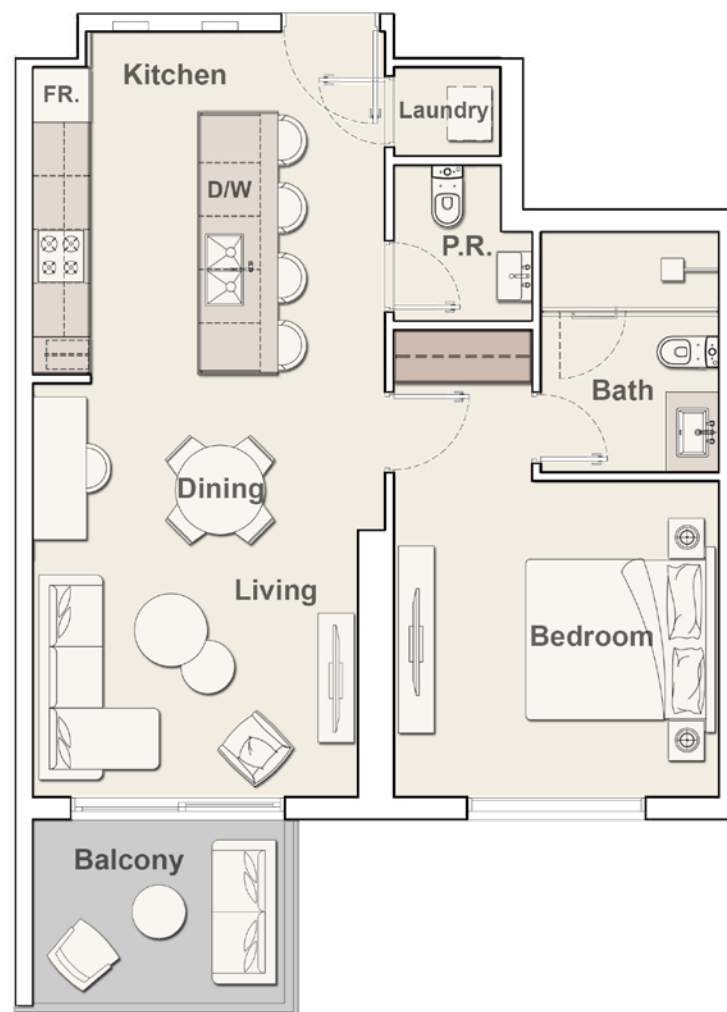


Surface interne	728.07 pi. ca.
Surface du balcon	71.90 pi. ca.
Surface totale	799.97 pi. ca.

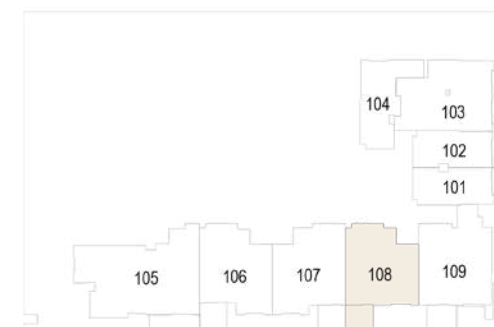
## T2 - TYPE C

# THE SLOANE

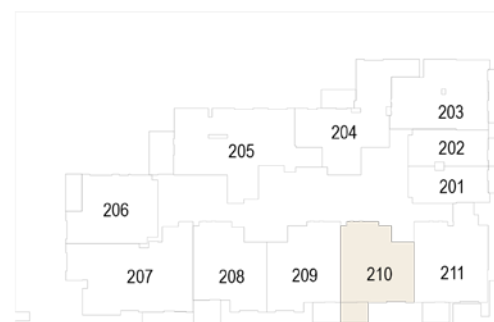
par BELGRAVIA HEIGHTS



### 1<sup>ER</sup> ÉTAGE



### DU 2<sup>ÈME</sup> AU 13<sup>ÈME</sup> ÉTAGE

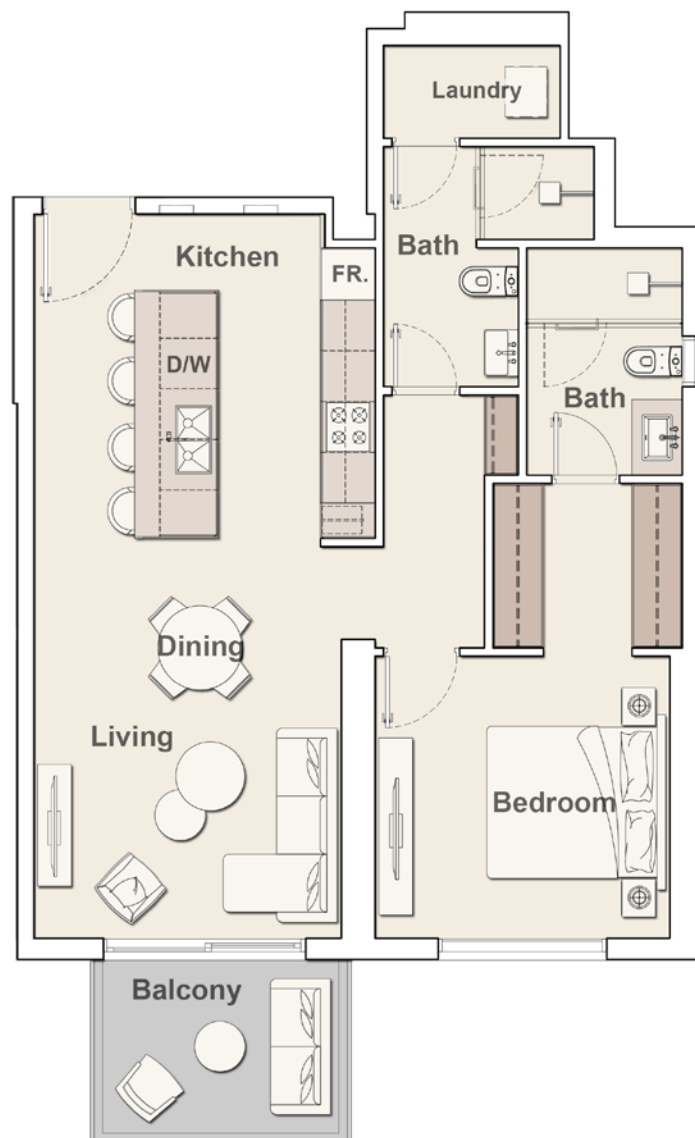


Surface interne	679.96 pi. ca.
Surface du balcon	71.90 pi. ca.
Surface totale	751.86 pi. ca.

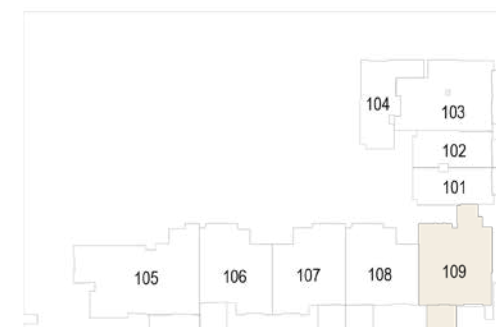
## T2 - TYPE D

# THE SLOANE

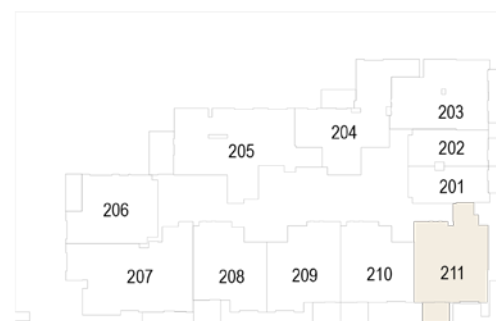
par BELGRAVIA HEIGHTS



### 1<sup>ER</sup> ÉTAGE



### DU 2<sup>ÈME</sup> AU 13<sup>ÈME</sup> ÉTAGE

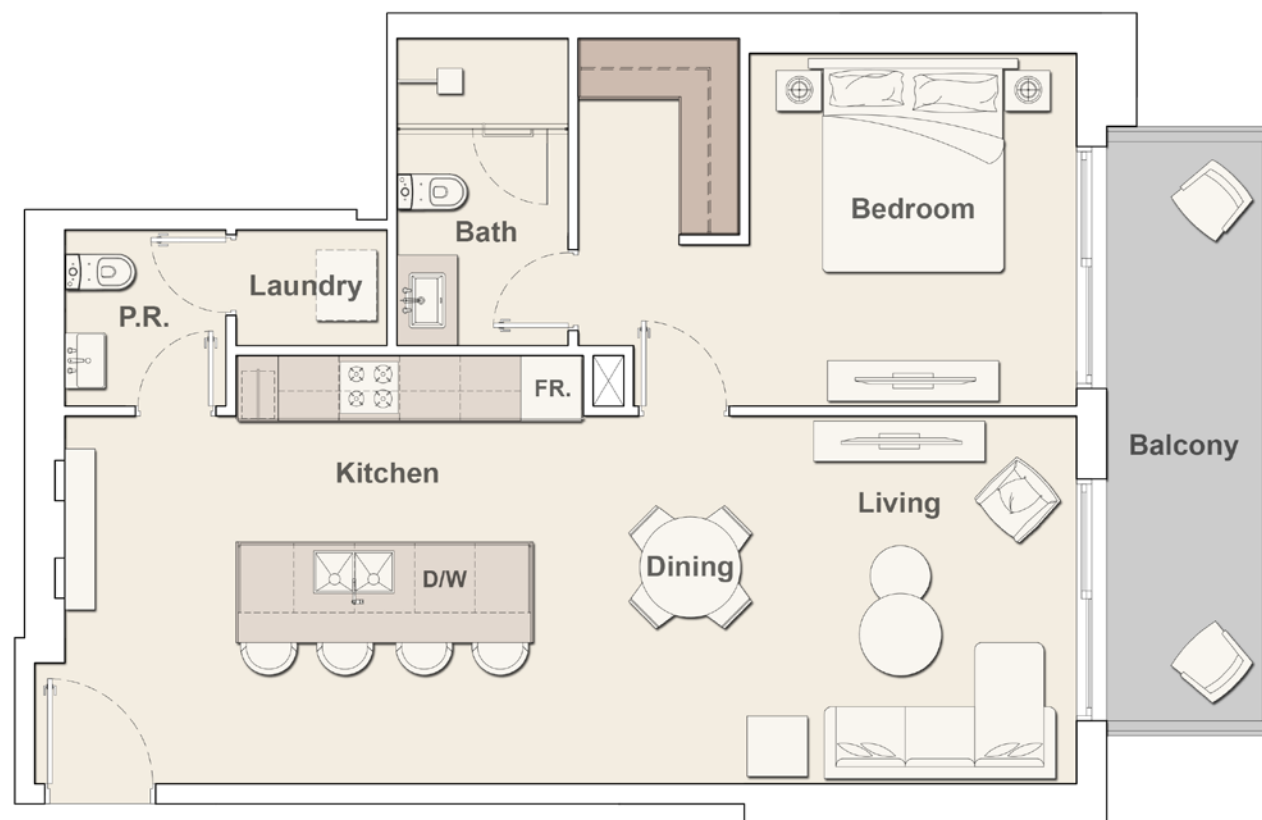


Surface interne	795.13 pi. ca.
Surface du balcon	70.07 pi. ca.
Surface totale	865.20 pi. ca.

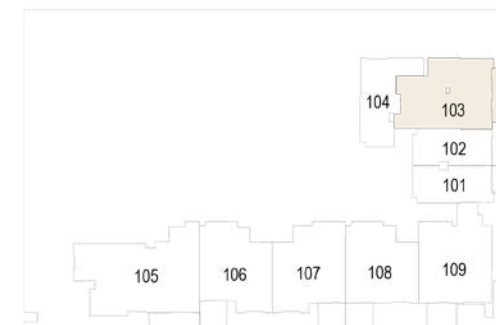
## T2 - TYPE F

# THE SLOANE

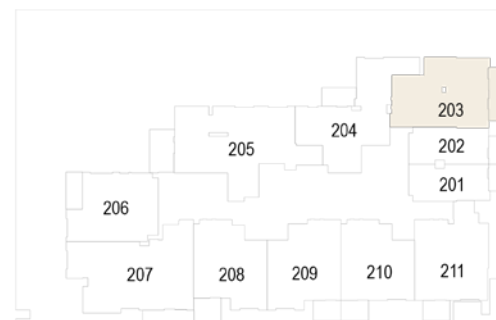
par BELGRAVIA HEIGHTS



### 1<sup>ER</sup> ÉTAGE



### DU 2<sup>ÈME</sup> AU 13<sup>ÈME</sup> ÉTAGE



Surface interne	782.97 pi. ca.
Surface du balcon	112.69 pi. ca.
Surface totale	895.66 pi. ca.

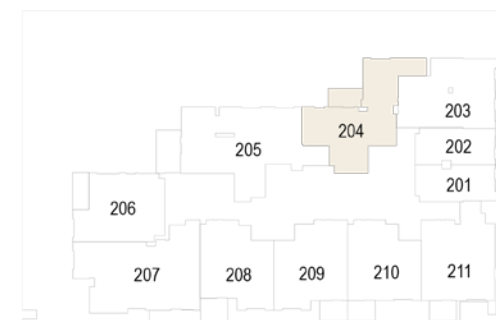
## T2 - TYPE H

# THE SLOANE

par BELGRAVIA HEIGHTS



### DU 2<sup>ÈME</sup> AU 13<sup>ÈME</sup> ÉTAGE

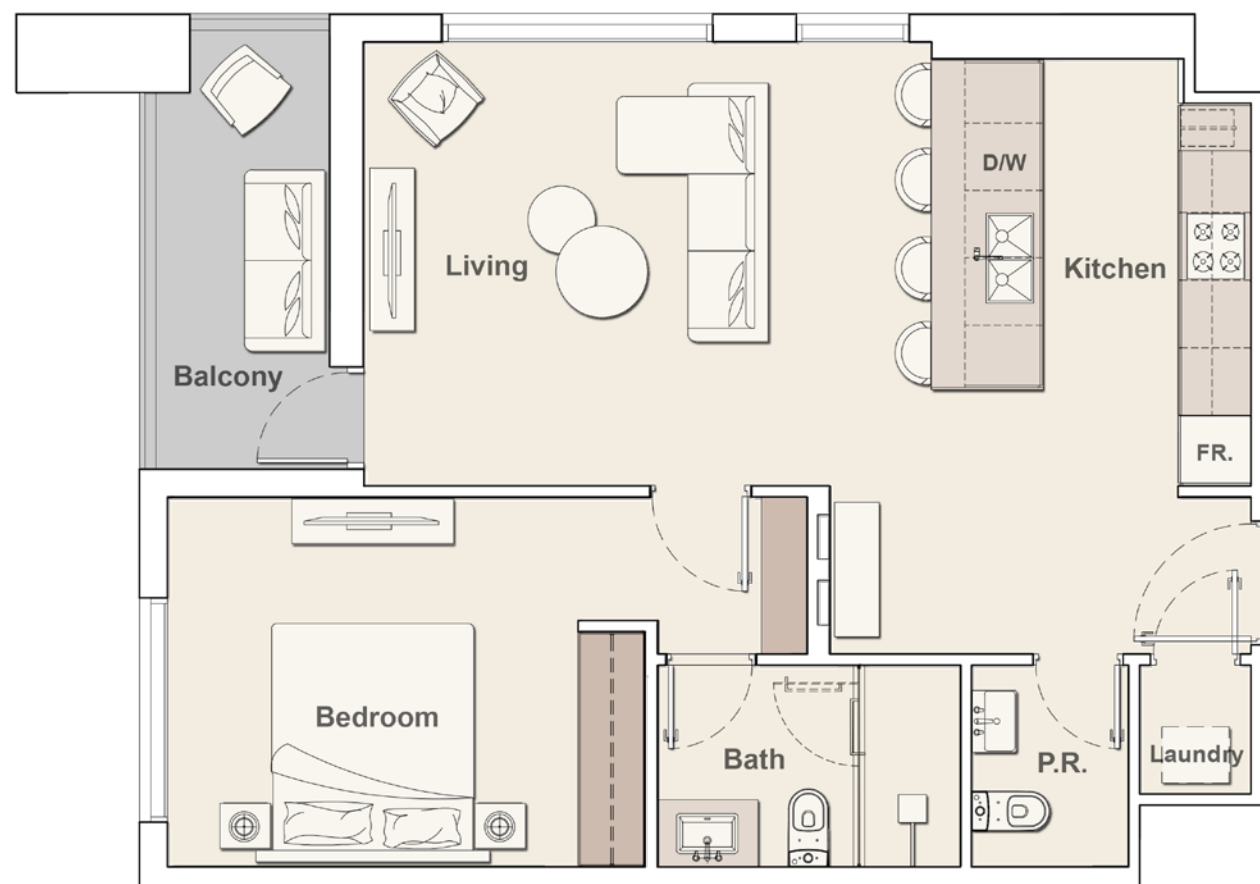


Surface interne	864.88 pi. ca.
Surface du balcon	79.65 pi. ca.
Surface totale	944.53 pi. ca.

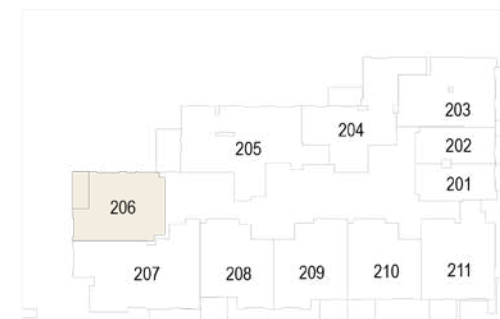
## T2 - TYPE J

# THE SLOANE

par BELGRAVIA HEIGHTS



### DU 2<sup>ÈME</sup> AU 13<sup>ÈME</sup> ÉTAGE

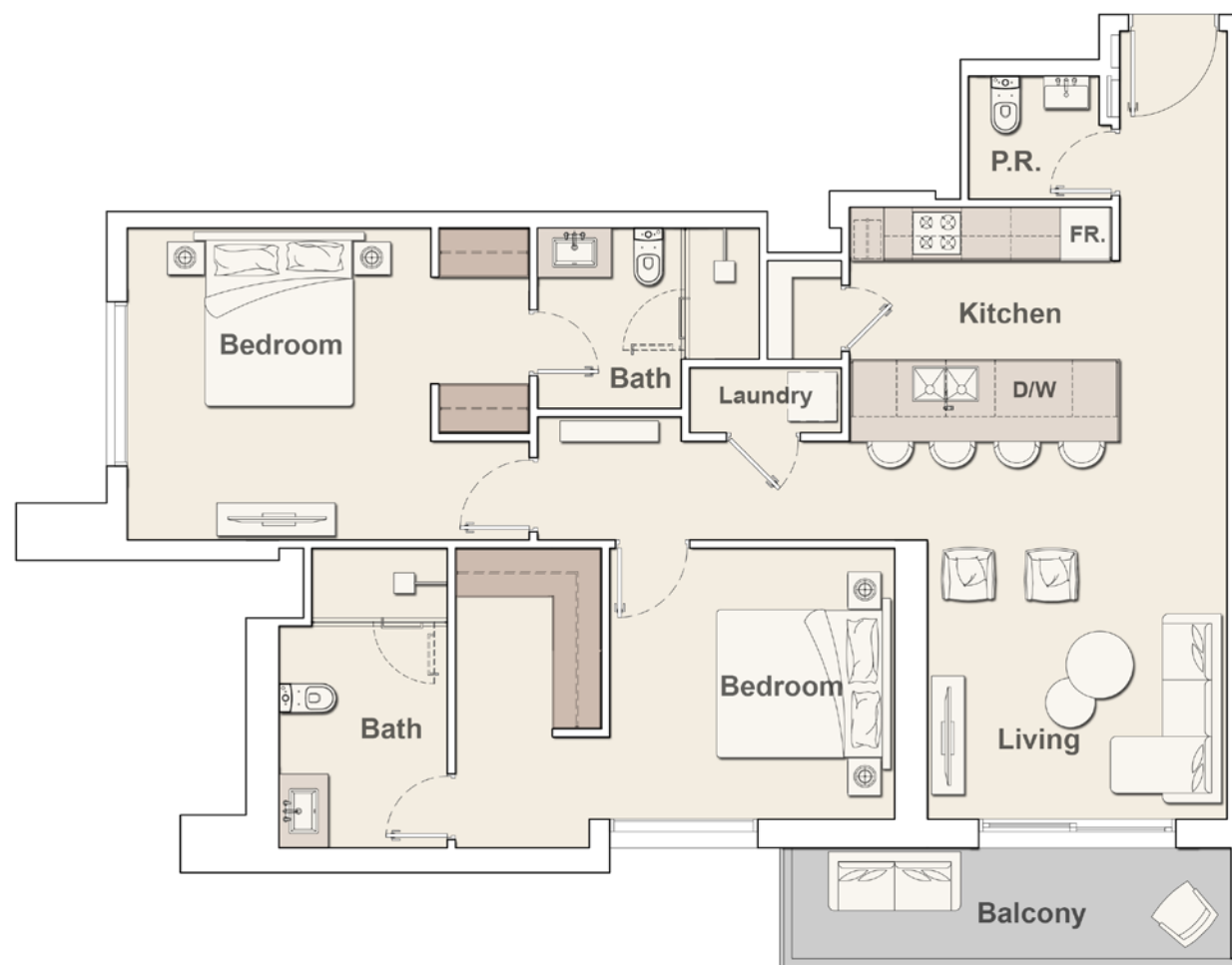


Surface interne	708.58 pi. ca.
Surface du balcon	76.75 pi. ca.
Surface totale	785.33 pi. ca.

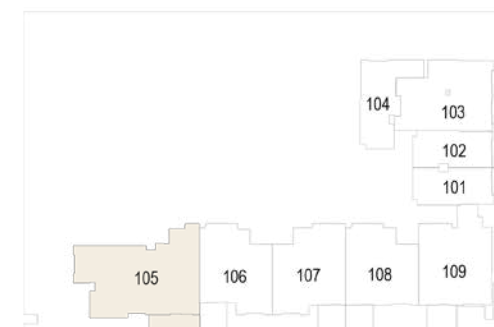
## T3 - TYPE A

# THE SLOANE

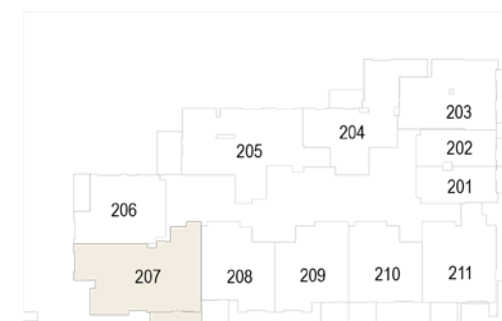
par BELGRAVIA HEIGHTS



### 1<sup>ER</sup> ÉTAGE



### DU 2<sup>ÈME</sup> AU 13<sup>ÈME</sup> ÉTAGE

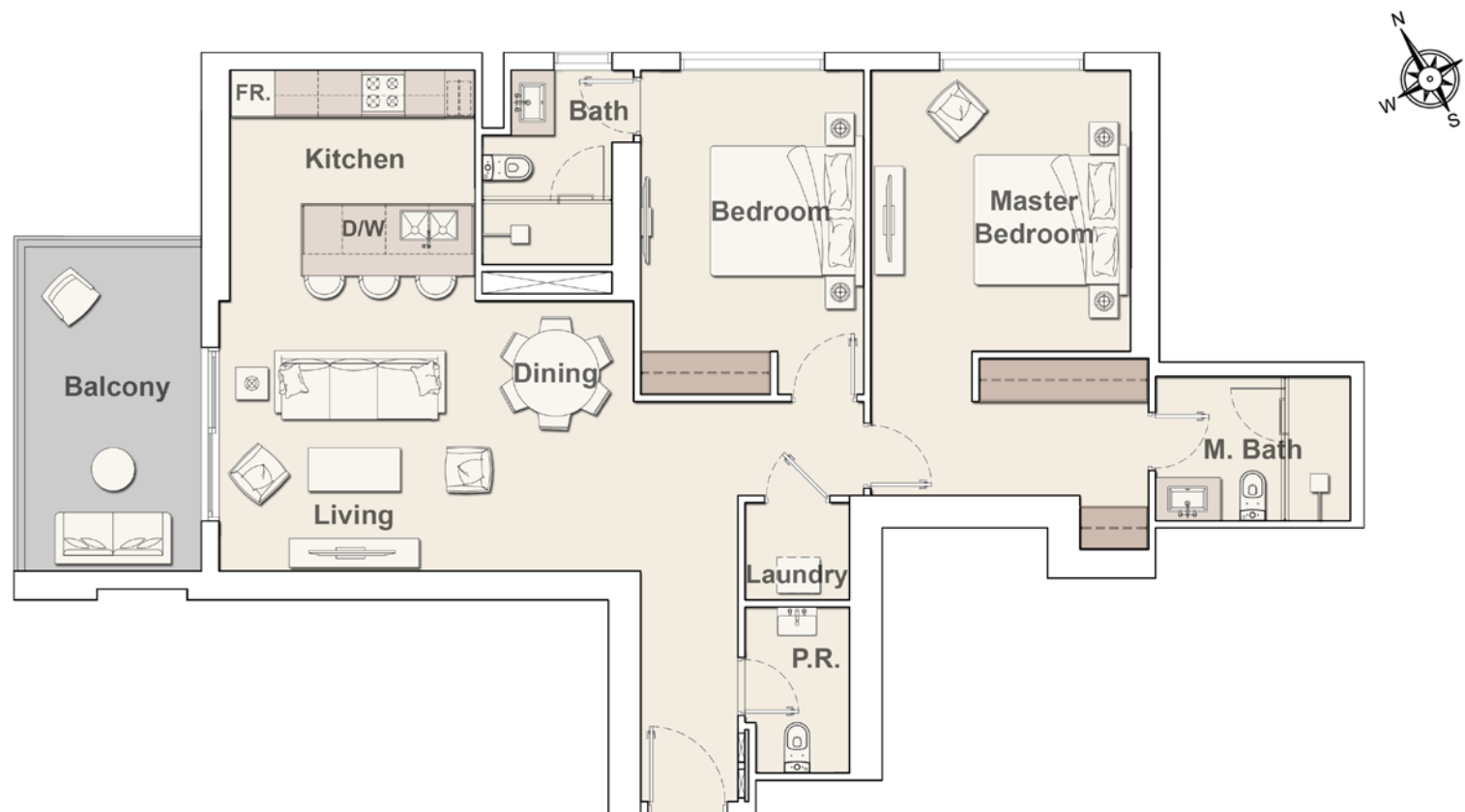


Surface interne	1,105.56 pi. ca.
Surface du balcon	95.15 pi. ca.
Surface totale	1,200.71 pi. ca.

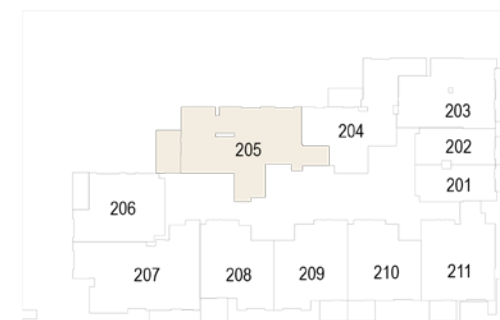
## T3 - TYPE I

# THE SLOANE

par BELGRAVIA HEIGHTS



### DU 2<sup>ÈME</sup> AU 13<sup>ÈME</sup> ÉTAGE



Surface interne	1,134.19 pi. ca.
Surface du balcon	134.12 pi. ca.
Surface totale	1,268.31 pi. ca.



LIVE IN *DESIGN*

ELLINGTONPROPERTIES.FR